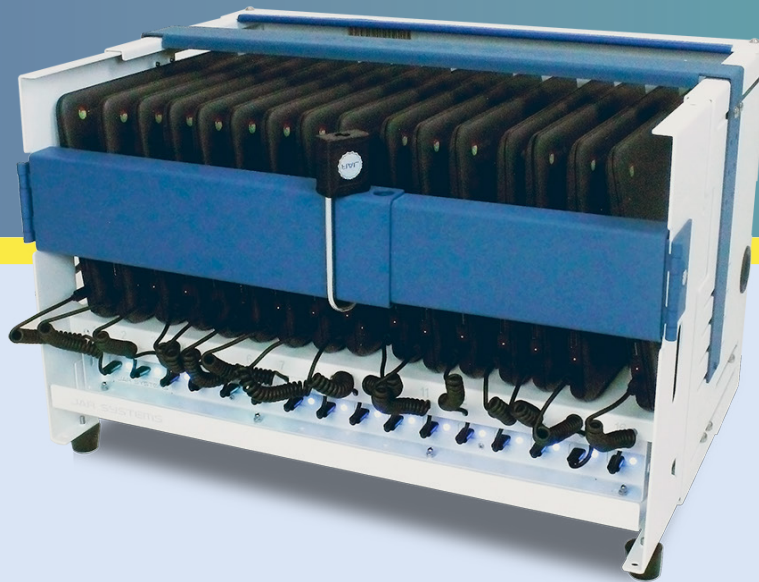


Essential 16

USB-C Charging Station

Owner's Manual
Version A



www.JAR-Systems.com | 866.393.4202

Essential Charging Station

Owner's Manual

Table of Contents

CS-1610-USBC, CS-1610-EDU

Included with the Essential Charging Station	3
Components	
Getting Started	3-4
Install the Supplied Rubber Feet (Optional)	
Secure Chassis to a Wall or Desk (Optional)	
Prepare the Station for Adjustability	
Adjust the Depth and Top Security Bar	
Remove Locking Arms (Optional)	
Secure the Station (Optional)	
Normal Operation	5
Troubleshooting.....	5
Always start troubleshooting with a simple reboot	
Single Port or Device Issue	
Entire Charging Hub/Shelf Issue	
Remove/Replace USB-C Cables	
Warnings.....	6
Disclaimer	6
Warranty	6

Disclaimer: Failure to read, thoroughly understand, and follow all instructions can result in serious personal injury, damage to equipment, or voiding of factory warranty. It is the installer's responsibility to make sure all mounting systems are properly assembled and installed using the instructions provided. This information is the intellectual property of JAR Systems LLC and may not be distributed, duplicated or copied in part or full without the written permission. Since the use of this information, the equipment connected and the conditions by which any JAR Systems product is used is beyond the control of JAR Systems, it is the obligation of the owner and/or user to determine the correct and safe use of any equipment and product. To the extent that the law permits, any liability which may be incurred as a result of the use or future use of a product manufactured or sold by JAR Systems is limited to the cost of repairing or replacing the failed product or component at the discretion of JAR Systems either within, or outside of warranty periods, and does not extend to any loss or damage which may be caused as a consequence of misuse or failure of the equipment or product or the information contained herein. JAR Systems shall not in any event be liable for economic loss of profits, indirect, special, bodily injuries or consequential damages. Specifications and images are for illustration purposes only. Final product may differ and is subject to change without notice.

Included:



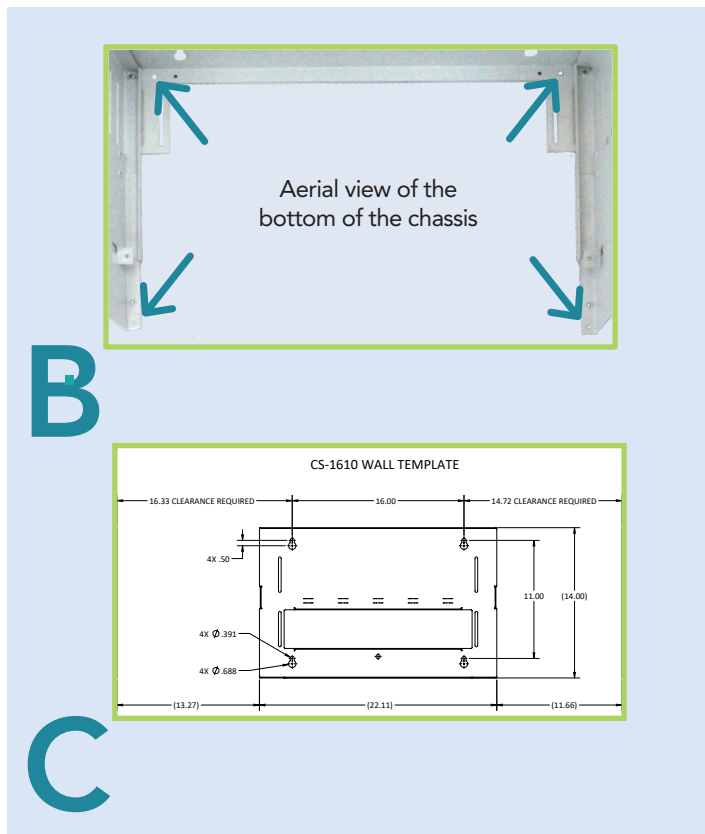
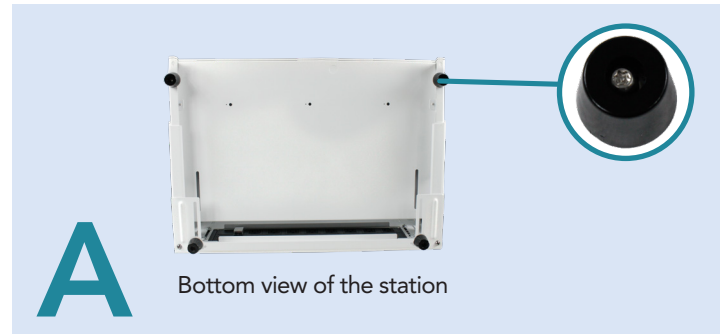
Components

1. (1) T25H Torx Key
2. (1) Padlock with (2) Keys
3. Right Angle Box Wrench
4. (1) Power Cable
5. (4) Rubber Feet
6. (4) Screws for Rubber Feet
7. 3 Sets of (4) Wall Mounting Screws
8. Spare hardware
9. Tools: Drill Bit

Getting Started

Install the Supplied Rubber Feet (Optional if Wall-Mounted)

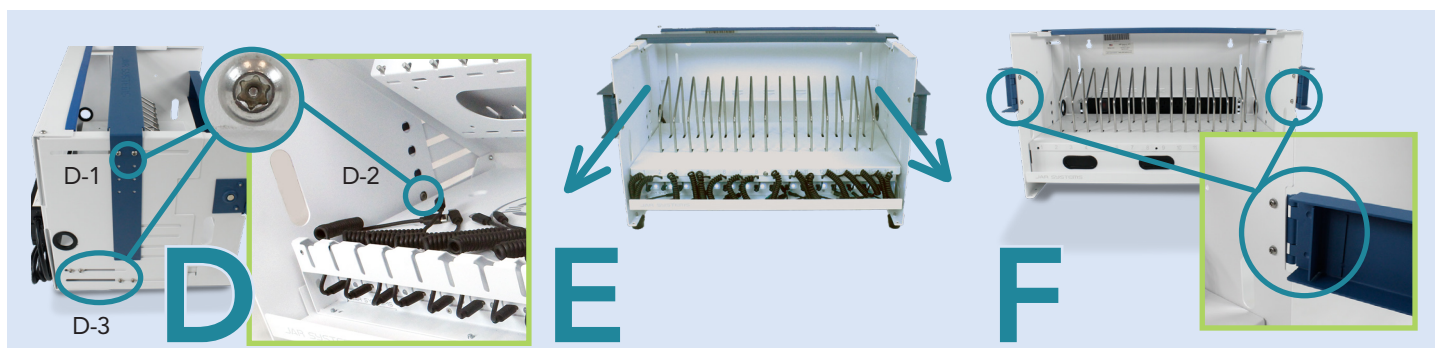
- A. The supplied rubber feet [5], [6] can be optionally installed in the four holes on the bottom side of the station beside the holes used for securing the station to a horizontal surface.



Secure Chassis to a Wall or Desk (Optional)

- B. If the station will be used on a table, desk, or countertop, it may be optionally secured to the surface by inserting 4 screws appropriate for the surface type through the bottom side of the chassis.
- C. To mount the station to a wall, use the supplied template as a guide for your screw location on the wall. Other tools helpful to mounting include a level, stud finder, and a pencil to mark mounting points over studs in the wall.

WARNING: Failure to provide adequate structural strength for this mounting system can result in serious personal injury or damage to equipment. It is the installer's responsibility to make sure the structure to which this mounting system is attached can support five times the combined weight of all equipment. Reinforce the structure as required before installing. The wall to which the mount is being attached may have a maximum drywall thickness of 5/8" (1.6cm). Always ensure that proper hardware is used for the wall surface type. Never operate this mounting system if it is damaged. Contact JAR Systems for replacement or repair.



Prepare the Station for Adjustability

D. To get started, begin by removing the 2 [D-1] screws on the outside of the top security bar on each side of the station. Next, remove the lower 1 [D-2] screw attaching the top security bar from the inside of the station on each side. Remove the locking bar and set it aside. Locate the 4 [D-3] screws on the outside of the station and loosen each screw.

Adjust the Depth and Top Security Bar

E. Pull out the sides of the chassis to the depth needed for your device. If the sides will not slide out easily, continue to loosen the pre-installed screws on the sides. Note: To prevent unauthorized removal of devices, do not extend the sides further than needed to fit the devices. Tighten the 4 [D-3] screws on the bottom holes on the outside of the station once the desired depth is adjusted.

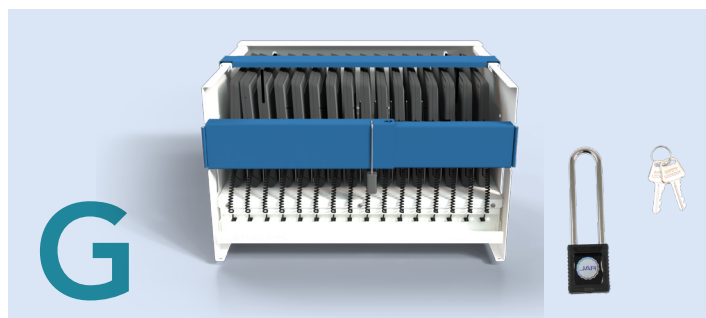
In order to ensure that devices are secure, replace the top security bar at the lowest height that will fit over the devices. Replace the 2 [D-1] screws on the outside of the station, through the top security bar and the [D2] screw from the inside on each side of the station.

Remove the Front Locking Arms (Optional)

F. To remove the front locking arms in order to have an open station, remove the 2 [F] screws on each side. The screws for the locking arms are installed from the inside of the chassis to prevent removal.

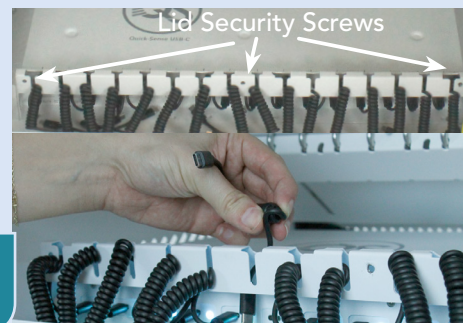
Secure the Station (Optional)

G. Use the included padlock to secure the station by looping it through the holes in the arms. Using the padlock in the "upside down" position may be easier for some users. **This step completes the setup for USB-C configurations.**



LED Charging Port Indicator Lights

- White: Port Ready
- Blue: Device Charging
- Green: Charge Level >90%



Normal Operation

- H. Plug the power cable into a standard 15A outlet. LEDs will illuminate white to indicate the station is connected to a power source. Power off devices fully before connecting them to the station for charging. Connect the devices to the USB-C charging cables.

The LED lights will change color according to the power draw of the attached devices. The system will automatically limit power consumption by turning some of the USB-C ports off temporarily. Refer to the device for the level of charge. Connected devices will charge as fast and evenly as possible without drawing too much power.

To remove devices from the stations with the greatest level of charge first, disconnect devices with the green LEDs first before you disconnect devices with the blue LEDs.

Devices that do not feature a USB-C charging port can be charged using USB-C emulator cables. (Not Included, contact JAR Systems for more info)

- I. Ensure that devices are placed in the station so that the charging ports are as close as possible to the USB-C charging port on the station. **Incorrectly connecting devices can strain the cable over long periods of time and lead to damage.**

Trouble-Shooting

Always start troubleshooting with a simple reboot

Unplug and replug the power cord. When the station is connected to power, the LEDs will change color based on the power draw of connected devices (see light indication).

Single Port or Device Issue

Ensure that both of the cable ends plug into the station and the device correctly. If there is still no charge, disconnect the device from that port (A) and plug into another port (B). If it is still not charging, it may be an issue with the device. If charging begins when using port (B), exchange the cable from port (B) to port (A). If it begins to charge, the cable (A) is defective and will need to be replaced.

Entire Charging Hub/Shelf Issue

Check the back of the charging hub to see if the station's power cable is plugged in and connected correctly. When the station is powered back on, the LED lights will begin to illuminate.

Remove/Replace USB-C Cables

- J. The shelf may be secured with up to three screws. Remove all screws with the supplied Torx key. Open the tray lid. Unplug the cables from the USB-C ports and route them through the cable track. Reverse the process to replace a cable.

Warnings

Exceeding the weight capacity can result in serious personal injury or damage to equipment. It is the installer's responsibility to make sure the combined weight of all components attached to this mount does not exceed 100 lbs.

If the station is being used or transported on an AV station or charging station, the station must be secured down to the station.

Power down all devices prior to connecting them to the Quick-Sense USB-C Hub for charging.

Keep away from moisture and harsh chemicals. Do not place any liquids near the station.

Any electrical equipment must be used by an adult or with adult supervision.

Do not connect unsupported items to the charging station or use for any purpose other than intended.

Do not attempt to obstruct any ventilation openings or dismantle, open, or modify the system in any way.

Do not sit or stand on the station or Quick-Sense USB-C Hub.

Do not use an extension cable or daisy-chain to any other devices.

The Quick-Sense USB-C Hub is not intended for operation at altitudes greater than 2000 m or 6561 ft above sea level and should not be operated in extreme temperatures. For indoor use only.

Disclaimer

Failure to read, thoroughly understand, and follow all instructions can result in serious personal injury, damage to equipment, or voiding of factory warranty. Since the use of this information, the equipment connected, and the conditions by which any JAR Systems product is used is beyond the control of JAR Systems, it is the obligation of the owner and/or user to determine the correct and safe use of any equipment and product. To the extent that the law permits, any liability which may be incurred as a result of the use or future use of a product manufactured or sold by JAR Systems is limited to the cost of repairing or replacing the failed product or component at the discretion of JAR Systems either within, or outside of warranty periods, and does not extend to any loss

or damage which may be caused as a consequence of misuse or failure of the equipment, product or the information contained herein. JAR Systems shall not in any event be liable for economic loss of profits, indirect, special, bodily injuries or consequential damages. Specifications and images are for illustration purposes only. Final product may differ and is subject to change without notice.

Warranty

This product comes with a warranty that covers any defects in material or workmanship and extends to the original consumer of the product only. JAR Systems, LLC will replace the product with a new or refurbished product, repair the product, send replacement parts, or refund the purchase price of the product, at JAR Systems, LLC's discretion. This warranty does not cover accidental damage, unreasonable use, neglect, tampering or other causes not arising from defects in material or workmanship.

Any implied warranties last only as long as the warranty periods listed above except where state law does not allow limitations on how long an implied warranty lasts. This includes but is not limited to the implied warranties or merchantability and fitness. JAR Systems, LLC's responsibility is limited to the actions listed above and nothing else.

This warranty does not cover, and JAR Systems, LLC will not be responsible for, any damages due to loss of use of the product, or any other costs or expenses incurred by you or anyone else who uses the product, whether due to defects, breach of contract, negligence, strict liability or otherwise. JAR Systems is not liable for any indirect, special, incidental or consequential damages related to the product or this warranty. Some states do not allow exclusions or limitations on consequential or incidental damages, so these limitations or exclusions may not apply.

This warranty gives you specific legal rights and you may also have other rights that vary from state to state. This warranty is governed by the laws of Florida, excluding its conflict of laws principles, unless your state requires that its law be used.

Contact JAR Systems for information on the length of warranty on your product(s).

