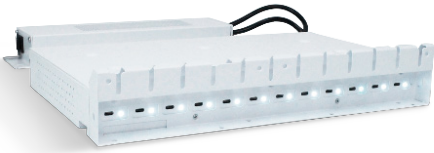


Easy-to-Service, AC Adapter-Free Charging Solution

Quick-Sense USB-C Charging Hub



12-Port



14-Port



16-Port

Universal Charging for Chromebooks,
Notebooks, or Tablets!



Efficient USB-C Charging

Quick-Sense USB-C charging identifies the devices' power needs to deliver a fast and balanced charge, up to 65W.



Reduce Lengthy Wiring!

Wiring can take up a lot of time and technology resources. Quick-Sense hubs are a low maintenance solution.



Use with Existing Solutions

Hubs are compatible with existing JAR carts and stations, see back side for compatibility details.



Save technicians' time with an AC adapter-free, easy-to-service charging solution. The Quick-Sense charging hub identifies the devices' power needs to deliver a fast and balanced charge up to 65W. The ports on the front make the Quick-Sense charging hub easy to service with less effort to install and less maintenance. This solution enables schools to add USB-C to existing charging stations or carts and leverage their device AC adapters for take-home use or other purposes.

[See Back for Compatibility Details >>>](#)



Upgrade to USB-C and Never Wire Charging Solutions Again!

Compatible with the Ultra-Light Carts, Flex-Share Stations and Essential Stations



Universal Compatibility

Connect any device to the provided USB-C to USB-C dongle cables or get emulator cables for another port type.



Easy Serviceability

Quick-Sense USB-C Charging Hubs are self-contained and easy to remove from the cart should they ever need service.



Always Ready to Charge

Dongle cables lock in place, so they are right where they are needed. Plug in a device at any time to start charging.

Choose Your Configuration

Name (Compatible Part No.)	Part Number*	Details
16-Port Quick-Sense Hub (MD-5150, CS-1610, CSE-1615, CSEM-1615-2U)	QUSBC-16	Includes 16 USB-C to USB-C cables
Essential 16 and Flex-Share Stations Upgrade Kit (CS-1610, CSE-1615, CSEM-1615-2U)	UGK-CS16-USBC Pairs with QUSBC-16	Power cable and hardware for installing hub into a station
Intelligent Charging Carts Upgrade Kit (MD-5150, MD-5135)	UGK-MD51-USBC Pairs with QUSBC-16 and QUSBC-14	Power cables and hardware for installing hub into a cart
14-Port Quick-Sense Hub (MD-5150, MD-5135)	QUSBC-14	Includes 14 USB-C to USB-C cables
12-Port Quick-Sense Hub (CS-1210)	QUSBC-12	Includes 12 USB-C to USB-C cables, power cable and hardware to install

Specifications

Hub Dimensions:

16 | 2.8"H x 20.7"W x 11.25"D | 12.8 lbs
 14 | 2.8"H x 18.3"W x 14"D | 12.65 lbs
 12* | 2.8"H x 15.8"W x 10.4"D and
 | 1.75"H x 14"W x 3.5"D | 12.15 lbs

*Comes in two pieces connected by a power cable

Quick-Sense Power:

65W output max per USB-C port
 500W output max per hub
 Overcurrent, overvoltage protection



Emulator Adapter Cables

* Due to the custom nature of this product, the part number for your order will vary. Contact your IT reseller for your specific part number.