

# ELEVATE MAX

## USB-C Charging Cart 36



Lifetime Warranty  
Option Available  
for Cart Body

*AC Adapter-Free, USB-C Charging*

ETL  
C LISTED US  
Intertek  
5014384



### Efficient USB-C Charging

Powered by Quick-Sense USB-C PD Charging, devices charge quickly and efficiently, up to 65W output per port.



### Stop Wiring Carts!

An AC adapter-free solution, Elevate Max saves time by removing cable management from your workflow.



### High-Capacity

Charge, secure, and transport large sets of up to 36 devices within a single high-capacity, small footprint cart.

The Elevate Max USB-C Charging Cart is the pinnacle of efficiency for charging, securing, and transporting large sets of up to 36 devices. Powered by Quick-Sense USB-C PD, there is no need to plug in and arrange messy AC adapters. Plug devices into the included connectors and enjoy quick and efficient charging. The cart's slender footprint, double doors, and swivel casters make devices easily accessible—even in small spaces. The high-capacity Elevate Max USB-C Charging Cart has larger device bays to suit a broader range of device sizes, up to 17-inch screen size.



Emulator Adapter Cables

## Maximize Your Charging Experience with AC Adapter-Free Carts



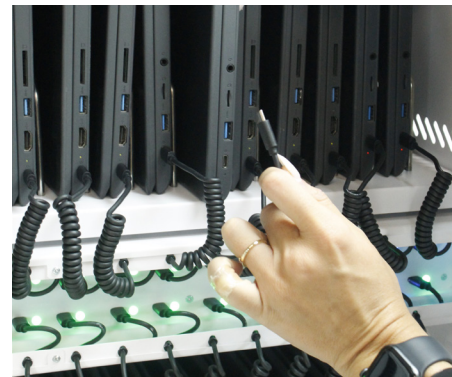
### Universal Compatibility

Connect any device to the provided USB-C to USB-C dongle cables or get emulator cables for another port type.



### Small Footprint

Make better use of your space with the Elevate Max USB-C Charging Cart's small footprint and double doors.



### Always Ready to Charge

Dongle cables lock in place, so they are right where they are needed. Plug in a device at any time to start charging.

## Specifications

### Part Number:

MC-7036-MAX\*

\*The part number used for your order may vary due to custom configurations. Contact your IT vendor for your specific part number.

### Cart Dimensions:

Including handles and bumpers:  
36.5"H x 30.6"W x 20.9"D  
5" casters, 4 swivel, 2 locking  
135 lbs.

### Max Devices Size:

24 Bays: 11.4"H x 1.75"W x 15.75"D  
30 Bays: 11.4"H x 1.3"W x 15.75"D  
36 Bays: 11.4"H x 1.1"W x 15.75"D  
Removable/adjustable steel dividers

### Locking:

3-point keyed lock with swing handle  
Hasp for padlock (padlock not included)

### Color:

Cool Gray/White

### Quick-Sense USB-C Specifications:

**Input** | 120V 50/60Hz 10A  
**Output** | 5V@2.7A/9V@2.7A/  
12V@2.7A/15V@2.7A/20V@3.1A  
1000W output max  
65W output max per USB-C port  
Overcurrent, overvoltage protection  
External, replaceable power cable  
External power switch

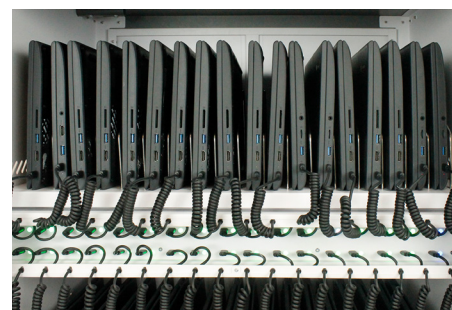
## Warranty

### Coverage:

**Cart** | Lifetime

**Quick-Sense USB-C Hub** | 2 years

**Cables** | 1 year



### Low-Maintenance

Quick-Sense USB-C Charging Hubs are self-contained and easily removed should they ever require servicing. USB-C to USB-C cables can be easily disconnected for replacement after removing the cable lock.

### Deploy with Ease

Leverage our experience in charging deployments to get a deployed solution with less labor. JAR Systems works with certified partners nationwide to provide the services your school needs for the devices you want.