

JAR Remote Management Cart Solution 20 user

Quickspecs (charges up to 20x 15.4" notebooks)



JAR SYSTEMS LLC
mobile solutions for education and training

JAR Remote Management Solution 20 (SB-5300B) + JAR Intelligent Charging System (PB-65C4B)



- Dimensions: 37" w x 26" d x 48" h
- 20 pull-out notebook trays
- 24 intelligent charging outlets for all Mini-PCs
- 3 internal power outlets for printer, network switch and wireless access point
- Unique intelligent power management/charging unit with surge protection and inrush current limiter. Keeps all notebooks charged from one standard power outlet (15A).
- 2 RJ45 LAN data ports for easy access to school network
- Incl. power cable, key locks, lockable 5" rubber casters
- High quality ergonomic computer furniture with secure sliding door system
- Service doors in the back for easy wire management (power and network cable)
- Network switches and WLAN access points can be mounted/wired inside the cart
- Charges up to 36x 10" Mini-PCs with extended battery packs
- Ships assembled with caster protection and ready to use
- Supports remote management functionality for all notebooks (WuOL)
- 3 year limited warranty on entire cart
- HP Part: A596499 + A729619



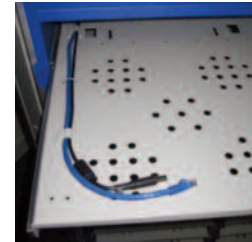
Back Doors Open



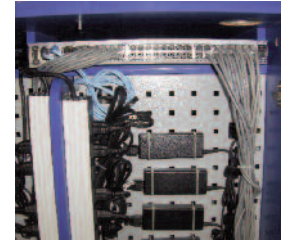
Front Sliding Doors Closed



Intelligent Charging System



Pull-out Trays and Wire Management throughout Cart



Charges 20x 15.4" notebooks



Why JAR Systems Mobile Computer Carts

- **Intelligent Charging System** - increased availability for class-time instruction.
- **Remote Management** - simplifies service and reduces cost.
- **Pull-out Trays and Wire Management** - less damage to notebooks and cables.
- **Sliding Doors** - Small footprint and safe/efficient use of available classroom space.
- **Ease of Use** - Designed by teachers and IT professionals with students/teachers in mind.
- **Versatility / Investment Protection** - 3 year warranty and support comes standard.

Contact your local HP Partner:

www.mobile-classroom.com

(866) 393-4202